



Viswambhara Educational Society
VAAGDEVI PHARMACY COLLEGE
AUTONOMOUS



Accredited by NAAC WITH 'A' Grade, Certified by ISO 21001 : 2018
Approved by PCI-New Delhi & Affiliated to JNTU, Hyderabad
KHAMMAM ROAD, BOLLIKUNTA, KHILA WARANGAL (MANDAL), WARANGAL - 506005, TELANGANA STATE

1. SOLID WASTE MANAGEMENT:

Vaagdevi Pharmacy College, Bollikunta, Warangal, is committed to maintaining a clean and healthy campus through effective waste management practices. The college promotes the concept of the three Rs – “REDUCE, REUSE, and RECYCLE” – with the goal of minimizing waste generation and ensuring proper disposal. The following methods are adopted for solid waste management:

Segregation of Waste:

Separate dustbins are strategically placed across the campus for biodegradable and non-biodegradable wastes.

The dustbins are clearly labelled with instructions to ensure that waste is correctly sorted, encouraging proper disposal habits among students and staff.

Decomposition of Larger Quantities of Biodegradable Waste:

Larger quantities of biodegradable waste are disposed of by dumping it into designated pits on the campus, where it naturally degrades over time.

Biological Waste Disposal:

Waste from the microbiology and pharmacology departments, which includes microorganisms and animal remains, is properly treated and disposed of according to established protocols, including the use of incinerators to ensure safe disposal.

Encouragement of Eco-friendly Practices:


To minimize the use of plastic, the college provides students with reusable bags featuring the college logo, discouraging the use of disposable plastic bags on campus.

Littering Prohibited:

Strict measures are in place to prevent littering on campus. All students and staff are encouraged to maintain cleanliness by disposing of waste responsibly.

By following these methods, Vaagdevi Pharmacy College ensures that waste is minimized, properly segregated, and treated in an environmentally responsible manner, contributing to a sustainable and hygienic campus.



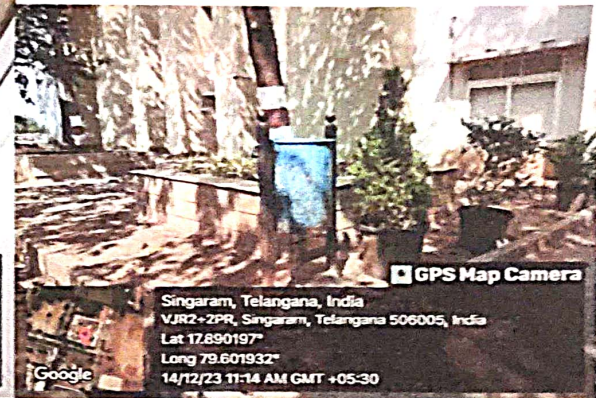
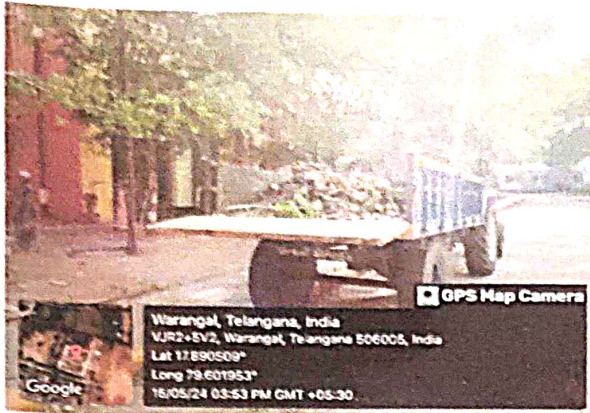

Principal
Vaagdevi Pharmacy College
Bollikunta, Warangal-506005 (T.S.)



Viswambhara Educational Society
VAAGDEVI PHARMACY COLLEGE
 AUTONOMOUS



Accredited by NAAC WITH 'A' Grade, Certified by ISO 21001 : 2018
 Approved by PCI-New Delhi & Affiliated to JNTU, Hyderabad
 KHAMMAM ROAD, BOLLIKUNTA, KHILA WARANGAL (MANDAL), WARANGAL - 506005, TELANGANA STATE



[Signature]
 Principal
 Vaagdevi Pharmacy College
 Bollikunta, Warangal-506005 (T.S)



Viswambhara Educational Society
VAAGDEVI PHARMACY COLLEGE
AUTONOMOUS



Accredited by NAAC WITH 'A' Grade, Certified by ISO 21001 : 2018
Approved by PCI-New Delhi & Affiliated to JNTU, Hyderabad
KHAMMAM ROAD, BOLLIKUNTA, KHILA WARANGAL (MANDAL), WARANGAL - 506005, TELANGANA STATE

2. LIQUID WASTE MANAGEMENT:

Vaagdevi Pharmacy College, Bollikunta, Warangal, has implemented a comprehensive liquid waste management system that prioritizes safety, sustainability, and environmental protection. Below are the key methods used for managing liquid waste:

1. Avoidance of Hazardous Chemicals:

- The use of hazardous liquid chemicals that produce dangerous fumes is avoided in the laboratory settings to minimize the risks associated with liquid waste disposal and to ensure the safety of both students and staff.

2. Waste Liquid Disposal System:

- The waste liquids generated on campus, including those from laboratories and washbasins, are directed through a well-constructed drainage system. This system leads to closed collection tanks, ensuring that any wastewater is contained and managed properly.

3. Regular Cleaning and Maintenance:

- The drainage system and collection tanks are regularly cleaned to maintain their efficiency and prevent any blockages or contamination. This ensures the long-term effectiveness of the liquid waste management system.

Through these methods, Vaagdevi Pharmacy College effectively manages liquid waste, reducing the environmental impact and contributing to the overall sustainability of the campus.



[Handwritten signature]
Principal
Vaagdevi Pharmacy College
506005



Viswambhara Educational Society
VAAGDEVI PHARMACY COLLEGE
AUTONOMOUS



Accredited by NAAC WITH 'A' Grade, Certified by ISO 21001 : 2018

Approved by PCI-New Delhi & Affiliated to JNTU, Hyderabad

KHAMMAM ROAD, BOLLIKUNTA, KHILA WARANGAL (MANDAL), WARANGAL - 506005, TELANGANA STATE



Principal
Vaagdevi Pharmacy College
Bollikunta, Warangal-506005 (T.S)



Viswambhara Educational Society
VAAGDEVI PHARMACY COLLEGE
AUTONOMOUS



Accredited by NAAC WITH 'A' Grade, Certified by ISO 21001 : 2018
Approved by PCI-New Delhi & Affiliated to JNTU, Hyderabad
KHAMMAM ROAD, BOLLIKUNTA, KHILA WARANGAL (MANDAL), WARANGAL - 506005, TELANGANA STATE

3. BIOMEDICAL WASTE MANAGEMENT:

Vaagdevi Pharmacy College recognizes the importance of proper biomedical waste management in maintaining a clean and healthy environment on campus. The college adheres to strict guidelines and protocols to ensure the safe and responsible handling, segregation, treatment, and disposal of biomedical waste, particularly generated from animal studies and laboratory research. Below are the key practices followed by the institution for biomedical waste management:

1. Segregation of Biomedical Waste:

- All biomedical waste generated on campus, especially from animal studies and laboratory research, is carefully segregated at the point of generation. The waste is categorized into different types, such as infectious waste, sharps, pharmaceutical waste, and chemical waste, to ensure proper disposal methods for each type.
- Color-coded bins are used for different categories of biomedical waste as per standard guidelines. This practice helps in preventing cross-contamination and ensures that each type of waste is handled appropriately.

2. Infection Control and Safe Disposal:

- Biomedical waste that could pose a risk of infection, including animal remains and contaminated materials, is burned using controlled incineration to ensure that harmful pathogens are destroyed in a safe manner.
- Incineration is done in a dedicated incinerator designed to handle biomedical waste, ensuring complete destruction of hazardous materials without posing a risk to the environment or public health.


3. Handling and Storage of Waste:

- Biomedical waste is stored temporarily in a secure and isolated area on the campus until it is collected and transported for disposal. This area is clearly marked and equipped with the necessary facilities to prevent leaks, spills, or exposure to the public.
- All waste is kept in properly labeled containers, which are designed to contain any liquids, chemicals, or biological materials that could pose a danger to the environment or staff members handling the waste.

4. Use of Safe and Approved Disposal Methods:

- For medical waste that cannot be incinerated (such as sharps, syringes, and vials), the college uses autoclaving (sterilization by steam) or other approved methods to neutralize hazardous agents before disposal.




Principal
Vaagdevi Pharmacy College
Bollikunta, Warangal-506005 (T.S.)



Viswambhara Educational Society
VAAGDEVI PHARMACY COLLEGE
AUTONOMOUS



Accredited by NAAC WITH 'A' Grade, Certified by ISO 21001 : 2018
Approved by PCI-New Delhi & Affiliated to JNTU, Hyderabad
KHAMMAM ROAD, BOLLIKUNTA, KHILA WARANGAL (MANDAL), WARANGAL - 506005, TELANGANA STATE

- All waste is disposed of in accordance with national and local environmental and health regulations, ensuring compliance with biomedical waste management standards.

5. Disposal of Non-Biomedical Contaminated Items:

- Items like pharmaceutical waste (expired drugs, bottles, etc.) and chemical waste are carefully neutralized or treated before disposal, following the appropriate protocols for each type of waste to prevent environmental contamination.

6. Training and Awareness:

- The college provides training and awareness programs for staff and students who may come into contact with biomedical waste. These programs educate individuals on the importance of proper waste handling, segregation, and the risks associated with mishandling biomedical waste.

7. Compliance and Monitoring:

- Regular inspections are carried out to ensure that all biomedical waste is being managed in compliance with national biomedical waste management rules (such as the Bio-Medical Waste Management Rules, 2016).
- Any incidents or non-compliance issues are promptly addressed, and corrective actions are taken to improve processes and safety measures.


8. Collaboration with Authorized Waste Collectors:

- The college has partnered with authorized biomedical waste management service providers for the transportation, treatment, and disposal of biomedical waste.
- These service providers are licensed and comply with all regulatory standards for the safe disposal of biomedical waste.

Conclusion:

Vaagdevi Pharmacy College is committed to ensuring that biomedical waste is handled with the utmost care and responsibility. By adhering to strict segregation, treatment, and disposal practices, and working with certified waste disposal partners, the college contributes to a safe and sustainable environment for research and education




Principal
Vaagdevi Pharmacy College
Bollikunta, Warangal-506005 (T.S)



Viswambhara Educational Society
VAAGDEVI PHARMACY COLLEGE
AUTONOMOUS



Accredited by NAAC WITH 'A' Grade, Certified by ISO 21001 : 2018
 Approved by PCI-New Delhi & Affiliated to JNTU, Hyderabad
KHAMMAM ROAD, BOLLIKUNTA, KHILA WARANGAL (MANDAL), WARANGAL - 506005, TELANGANA STATE



[Signature]
 Principal
 Vaagdevi Pharmacy College
 Bollikunta, Warangal-506005 (T.S)



Viswambhara Educational Society
VAAGDEVI PHARMACY COLLEGE
AUTONOMOUS



Accredited by NAAC WITH 'A' Grade, Certified by ISO 21001 : 2018
Approved by PCI-New Delhi & Affiliated to JNTU, Hyderabad
KHAMMAM ROAD, BOLLIKUNTA, KHILA WARANGAL (MANDAL), WARANGAL - 506005, TELANGANA STATE

4. E-WASTE MANAGEMENT:

Vaagdevi Pharmacy College is committed to responsible e-waste management to ensure the safe disposal and recycling of electronic waste generated on campus. Given the increasing reliance on electronic devices such as computers, printers, and other IT equipment, the college has put in place structured systems to handle e-waste in an environmentally friendly manner.

Here are the key practices for managing e-waste at Vaagdevi Pharmacy College:

1. E-Waste Collection and Segregation:

- The college has designated collection points across the campus for the segregation and safe collection of e-waste such as old computers, printers, batteries, mobile phones, cables, and other electronic devices.
- These items are clearly marked and separated from other types of waste to prevent harmful contamination.

2. Tie-up with Authorized E-Waste Recycling Vendors:

- To ensure proper recycling and disposal of electronic waste, the college has established a partnership with certified e-waste recycling companies. These vendors follow industry standards to dismantle and recycle e-waste in an environmentally safe manner.
- The recycling process includes the extraction of reusable materials such as metals, plastics, and glass, which reduces the need for virgin materials and helps conserve resources.

3. Data Destruction and Privacy Protection:

- For electronic devices that contain sensitive data, such as computers and hard drives, the college ensures that data destruction protocols are followed before disposal. This includes the use of software or physical methods to wipe or destroy data, ensuring privacy and confidentiality.

4. Awareness and Education:

- The college actively educates students and staff about the environmental hazards of improper e-waste disposal and the importance of responsible e-waste management. Awareness campaigns and workshops are conducted to encourage proper disposal practices and the responsible use of electronics.

5. Periodic Monitoring:

- Regular monitoring are conducted to assess the volume of e-waste generated and ensure compliance with proper disposal and recycling protocols. This also helps in identifying opportunities for reducing electronic waste generation on campus.



Principal
Vaagdevi Pharmacy College
Bollikunta, Warangal-506005 (T.S)



Viswambhara Educational Society
VAAGDEVI PHARMACY COLLEGE
AUTONOMOUS



Accredited by NAAC WITH 'A' Grade, Certified by ISO 21001 : 2018
Approved by PCI-New Delhi & Affiliated to JNTU, Hyderabad
KHAMMAM ROAD, BOLLIKUNTA, KHILA WARANGAL (MANDAL), WARANGAL - 506005, TELANGANA STATE

6. Reusing and Refurbishing:

- Whenever possible, the college aims to reuse functional electronic devices and refurbish old equipment for continued use, thereby extending the life cycle of electronic items and minimizing waste.

Through these efforts, Vaagdevi Pharmacy College ensures that its e-waste is managed in a way that minimizes environmental impact, promotes recycling, and supports sustainability on campus.



Principal
Vaagdevi Pharmacy College
Bollikunta, Warangal-506005 (T.S)



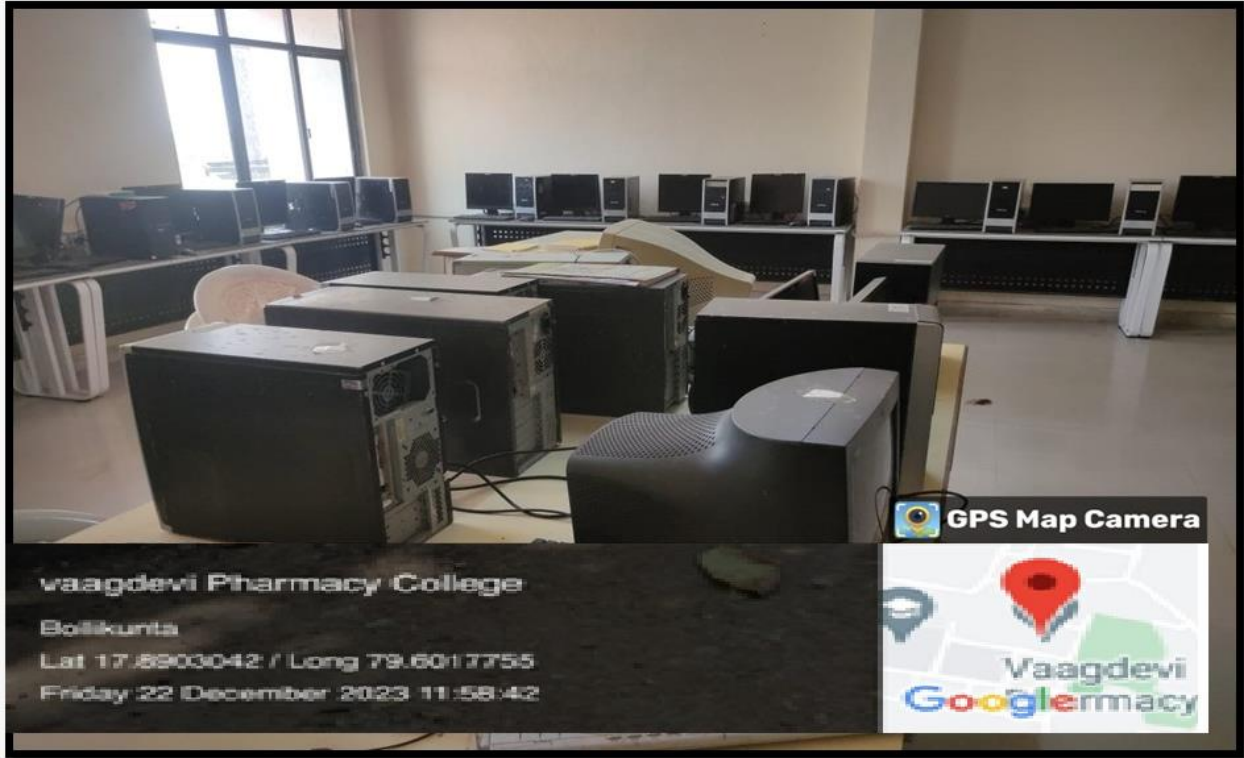
Viswambhara Educational Society
VAAGDEVI PHARMACY COLLEGE
AUTONOMOUS



Accredited by NAAC WITH 'A' Grade, Certified by ISO 21001 : 2018

Approved by PCI-New Delhi & Affiliated to JNTU, Hyderabad

KHAMMAM ROAD, BOLLIKUNTA, KHILA WARANGAL (MANDAL), WARANGAL – 506005, TELANGANA STATE



vaagdevi Pharmacy College
Bollikunta
Lat 17.8903042 / Long 79.6017755
Friday 22 December 2023 11:58:42



[Handwritten Signature]

Principal
Vaagdevi Pharmacy Co.
Bollikunta, Warangal-506005 (T.S.)



Viswambhara Educational Society
VAAGDEVI PHARMACY COLLEGE
AUTONOMOUS



Accredited by NAAC WITH 'A' Grade, Certified by ISO 21001 : 2018
Approved by PCI-New Delhi & Affiliated to JNTU, Hyderabad
KHAMMAM ROAD, BOLLIKUNTA, KHILA WARANGAL (MANDAL), WARANGAL – 506005, TELANGANA STATE

5. HAZARDOUS CHEMICALS AND RADIOACTIVE WASTE MANAGEMENT:

Vaagdevi Pharmacy College takes a comprehensive approach to the management of hazardous chemicals, biomedical waste, and potential radioactive materials, ensuring that all waste is handled safely, responsibly, and in accordance with environmental regulations. Below are the key methods employed for the management of such waste on campus:

1. Biomedical Waste Management (Animal Studies and Research):

- Biomedical waste, specifically generated from animal studies conducted for research purposes, is adequately segregated to avoid any risk of contamination or infection.
- After separation, the biomedical waste is burned using controlled incineration methods, ensuring that any pathogens are destroyed, preventing potential health hazards on campus.

2. Non-use of Harmful or Radioactive Substances:

- The campus does not employ harmful chemicals or radioactive substances in its operations or research. This policy helps minimize the risks associated with the handling, disposal, and potential contamination from such hazardous materials.

3. Chemical Waste Disposal in Laboratories:

- Chemicals used in laboratories are carefully neutralized before disposal to ensure they do not pose any threat to the environment or public health.
- The college follows proper chemical disposal protocols, ensuring that no toxic or hazardous chemicals are released into the campus's drainage system or surroundings.

4. Storage of Empty Chemical Containers:


- These containers are kept in a secure and controlled space until they are picked up by the authorized garbage collector for proper disposal or recycling. This practice ensures that these potentially harmful containers do not pose a risk to the campus environment.

5. Regular Monitoring and Compliance:

- The college adheres to local and national regulations concerning the disposal and management of hazardous materials. Regular audits and checks are carried out to ensure compliance with environmental and safety standards, and any waste management practices are periodically reviewed for improvements.

Through these effective and responsible waste management practices, Vaagdevi Pharmacy College ensures the safe disposal of hazardous chemicals and biomedical waste, while also contributing to a clean and safe environment for students, staff, and the surrounding community.




Principal
Vaagdevi Pharmacy College
Khammam Road, Bollikunta, Warangal (T.S.)



Viswambhara Educational Society
VAAGDEVI PHARMACY COLLEGE
AUTONOMOUS



Accredited by NAAC WITH 'A' Grade, Certified by ISO 21001 : 2018
 Approved by PCI New Delhi & Affiliated to JNTU, Hyderabad
KHAMMAM ROAD, BOLLIKUNTA, KHILA WARANGAL (MANDAL), WARANGAL - 506005, TELANGANA STATE

 **GREATER WARANGAL MUNICIPAL CORPORATION**
పరంగల్ మహానగర పాలక సంస్థ

తేది: 10-06-2023,

గౌరవనీయులైన ప్రధాన ఉపాధ్యాయుల గారికి,
 వాగ్దేవి ఫార్మసీ కళాశాల,
 బొల్లికుంట,
 వరంగల్ -506 005.

SUB : చెత్త రీసైకింగ్ మరియు సేకరణ

మా గ్రామ ప్రజలకు మరియు మీ సూచనల మధ్య ఉన్న సంబంధం చాలా ప్రశంసనీయం. మేము మా బంధాన్ని ఎప్పటికీ ఒకే టైల్లో కొనసాగిస్తాము. మా గ్రామంలో విద్యా కార్యక్రమాలు, వైద్య శిబిరం మరియు NSS కార్యకలాపాలను నిర్వహించడంలో సహకరించినందుకు విద్యార్థులు మరియు సిబ్బందికి మేము కృతజ్ఞులను చెప్పాలి.

మీ లేఖ 08-06-2023 కి ప్రతిస్పందనగా, చెత్తను సేకరించి రీసైకింగ్ ప్లాంట్లకు పంపడానికి మీ సూచనల మేరకు మేము అచ్చితంగా వాహనాన్ని క్రమం తప్పకుండా పంపులాము.

ధన్యవాదములు.




GADDE BABU
 17th Floor, Vaagdevi Pharmacy
 Greater Warangal, BOLLIKUNTA, KHILA WARANGAL (Mandal),
 Warangal, (T.S.) Dist. Warangal, Telangana
 506005, India. Phone: 7995007717



Principal
 Vaagdevi Pharmacy College
 Bollikunta, Warangal-506005 (T.S.)